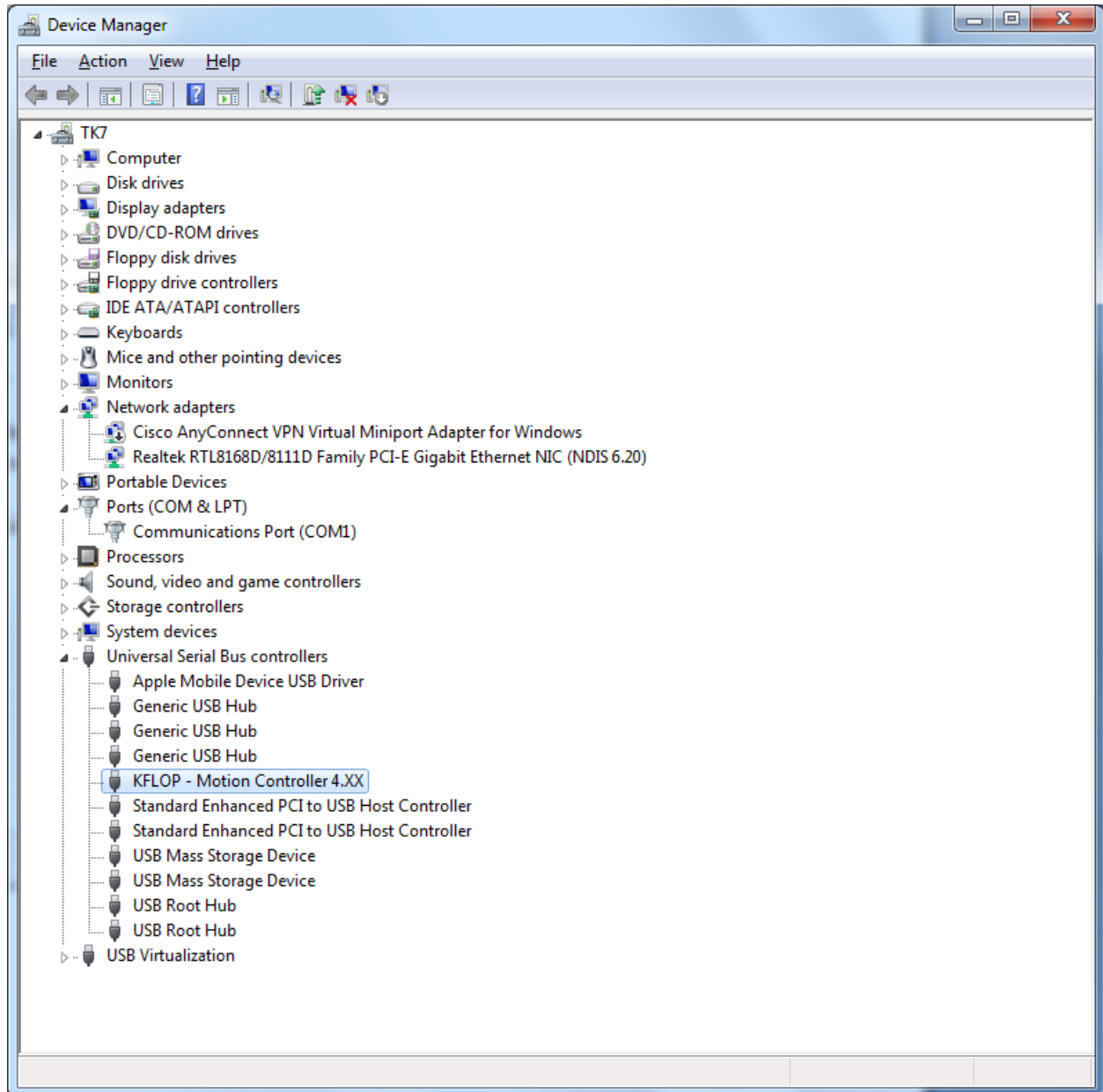
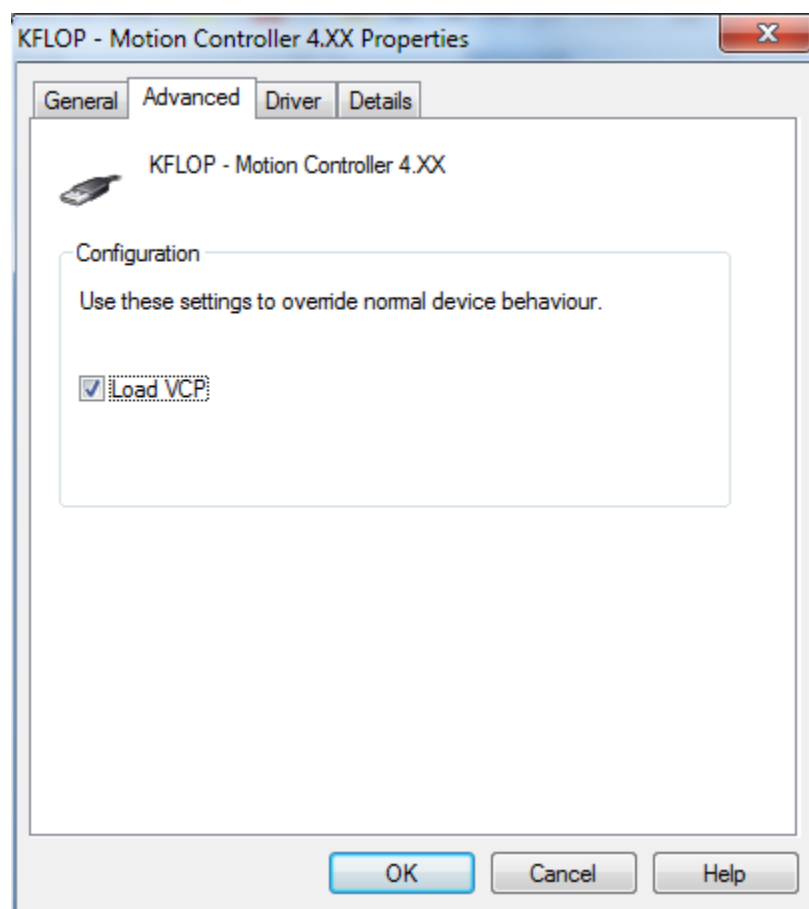


First install KFLOP normally using our USB Drivers. When successful there should be a KFLOP entry in Device manager as shown below

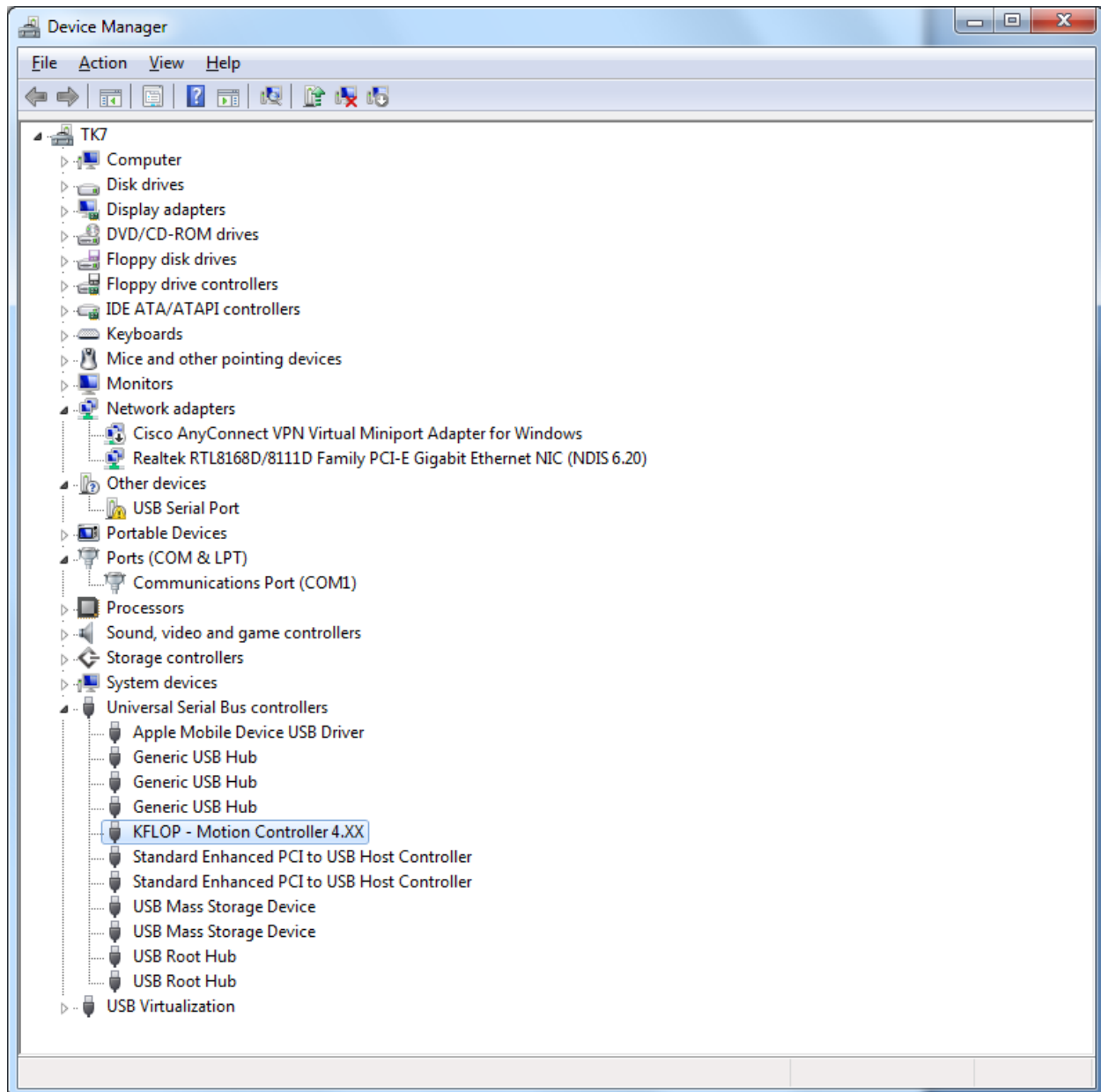


Now select properties – advanced – load VCP (Virtual Com Port)



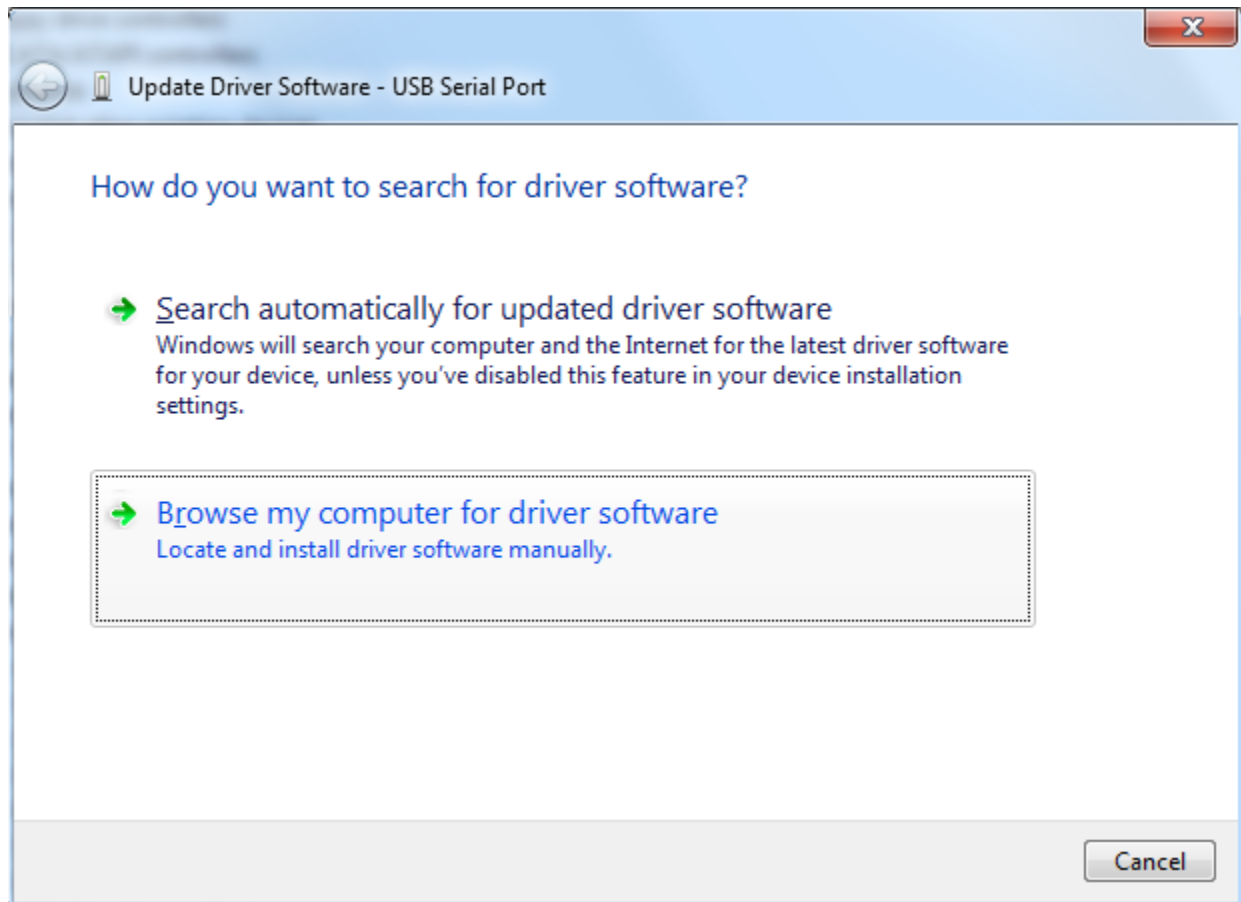
Ok then unplug/re-plug KFLOP

There should now be a USB Serial Port – but missing the driver

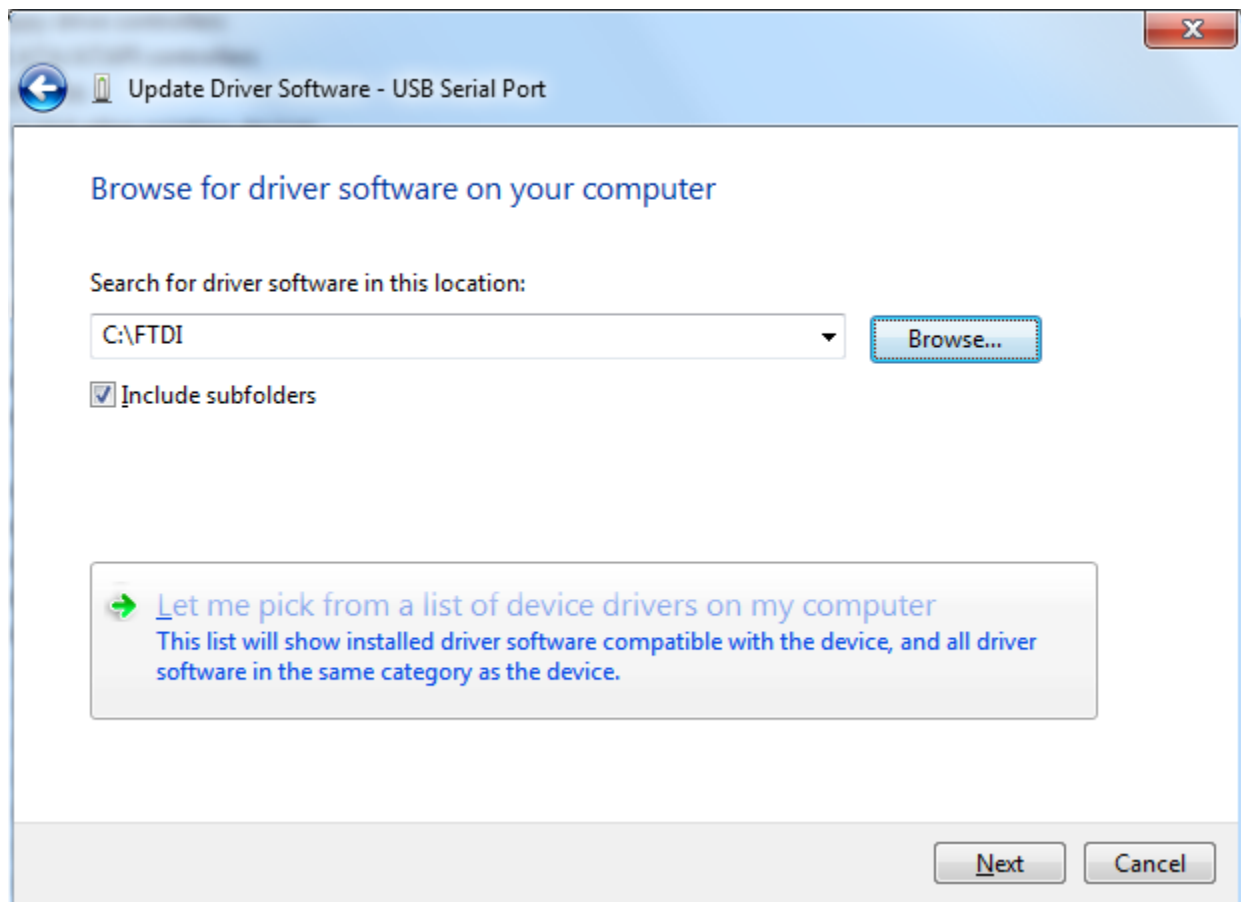


On Usb Serial Port - right click – Update Driver

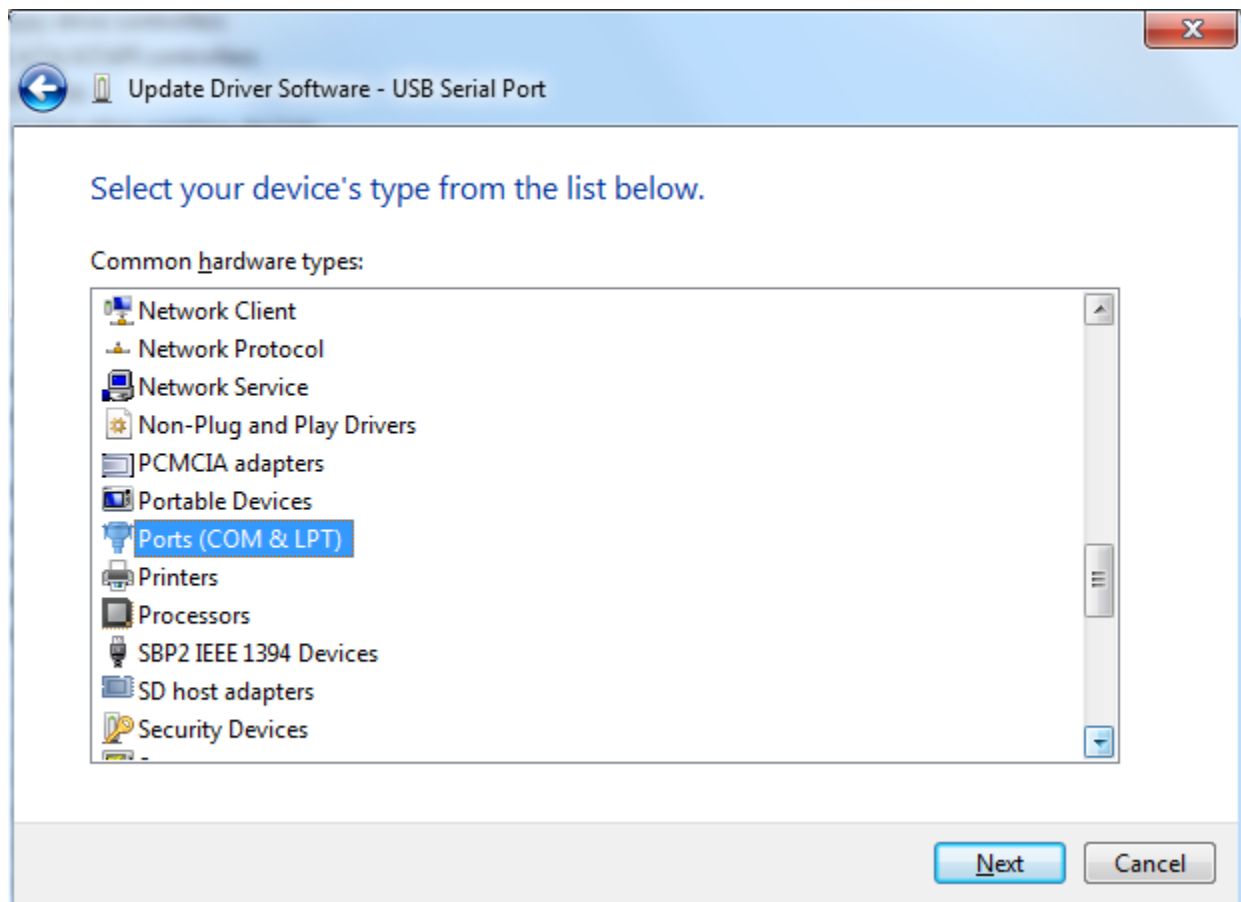
Select Browse my computer



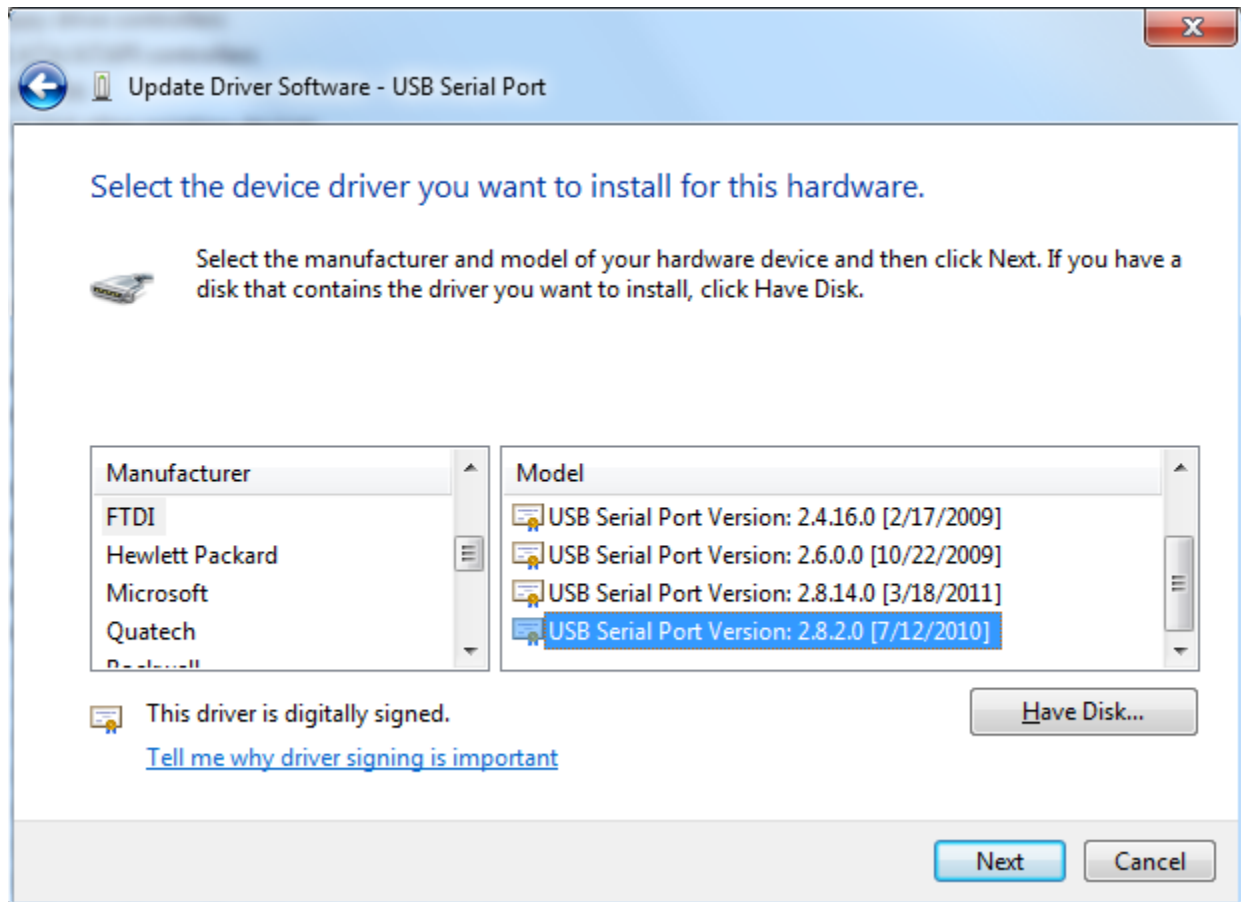
Then “Let me Pick ...”



Select Device type as "Ports"

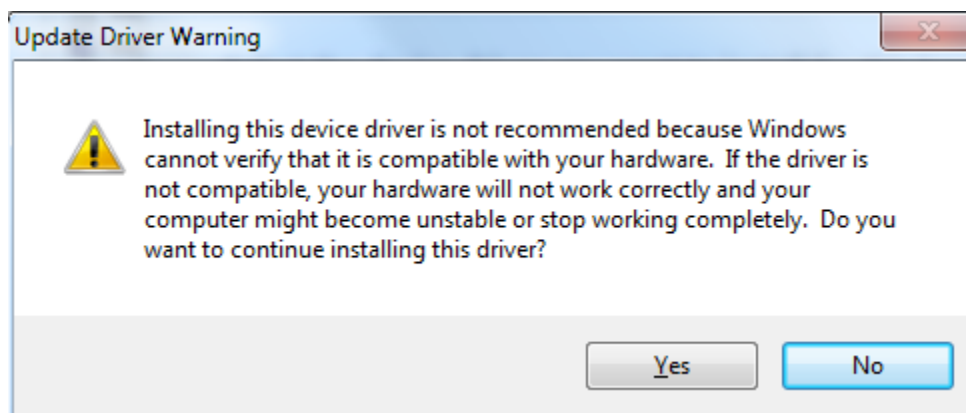


FTDI drivers should be pre-installed with Windows. Select FTDI and then latest USB Serial Port Version

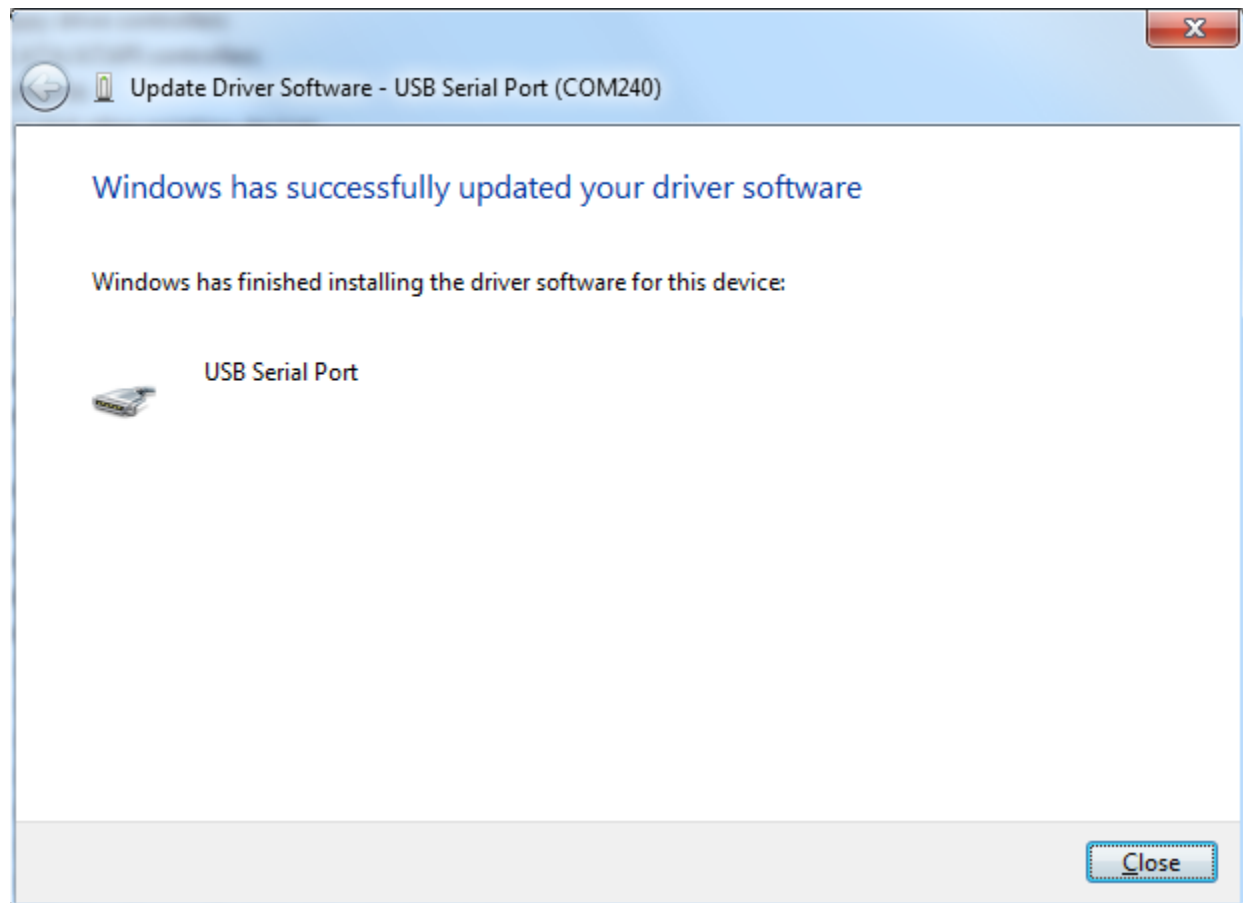


Manufacturer FTDI – USB Serial Port 2.8.2.0 (or other?)

We have a different manufacturer ID so you get this warning – say YES

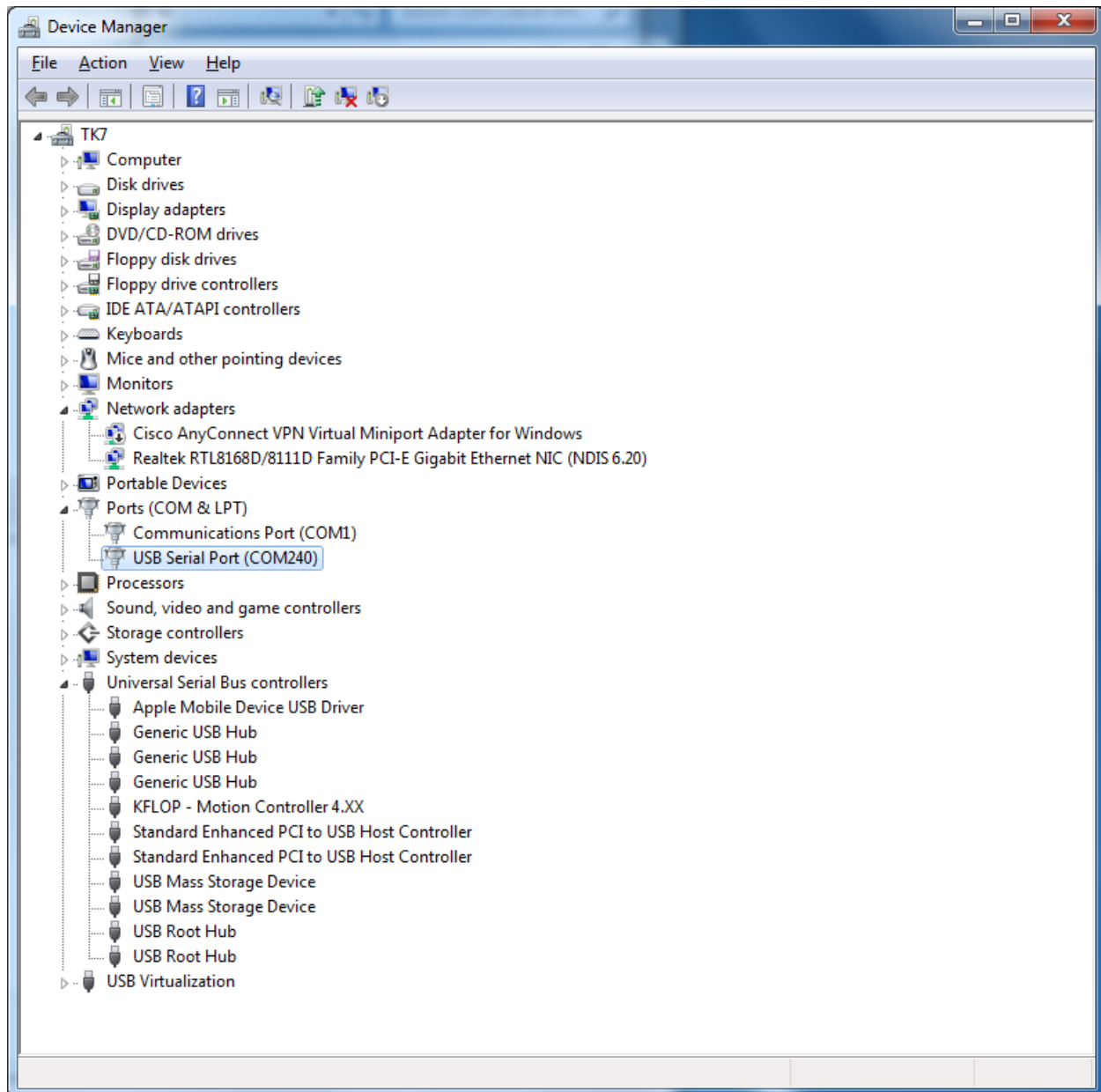


It should succeed

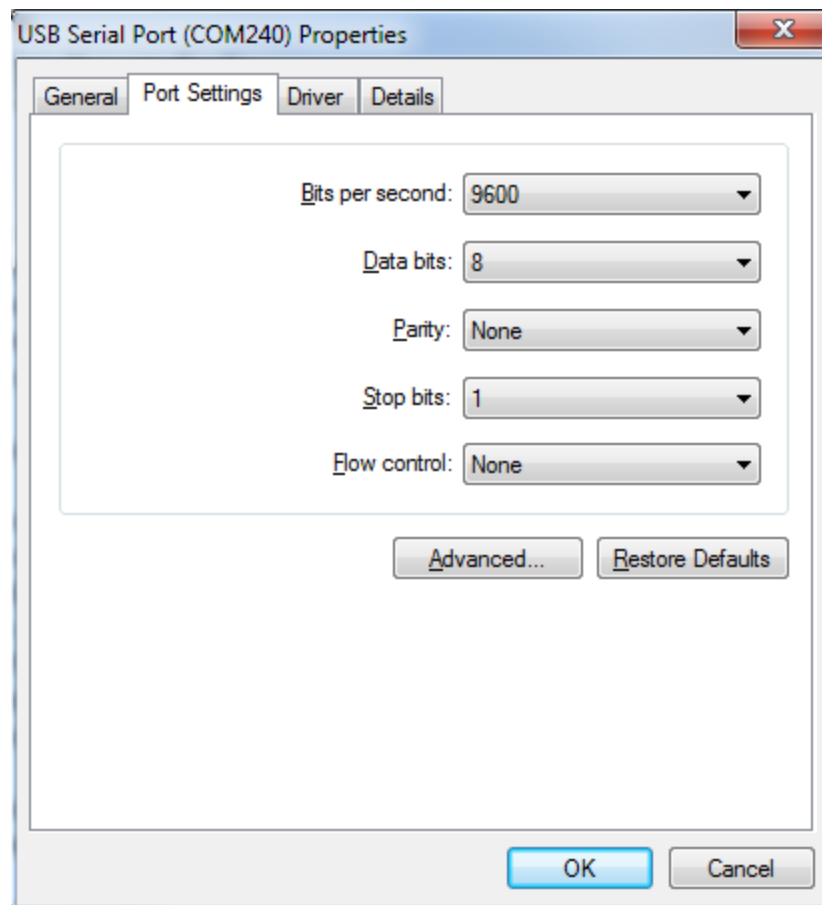




Is should now work, but if you need to change the COM port number do the following



Right Click Properties – Port Settings



Advanced

Advanced Settings for COM240

COM Port Number: COM2

OK

Cancel

Defaults

USB Transfer Sizes

Select lower settings to correct performance problems at low baud rates.

Select higher settings for faster performance.

Receive (Bytes): 4096

Transmit (Bytes): 4096

BM Options

Select lower settings to correct response problems.

Latency Timer (msec): 16

Timeouts

Minimum Read Timeout (msec): 0

Minimum Write Timeout (msec): 0

Miscellaneous Options

Serial Enumerator ☒

Serial Printer ☐

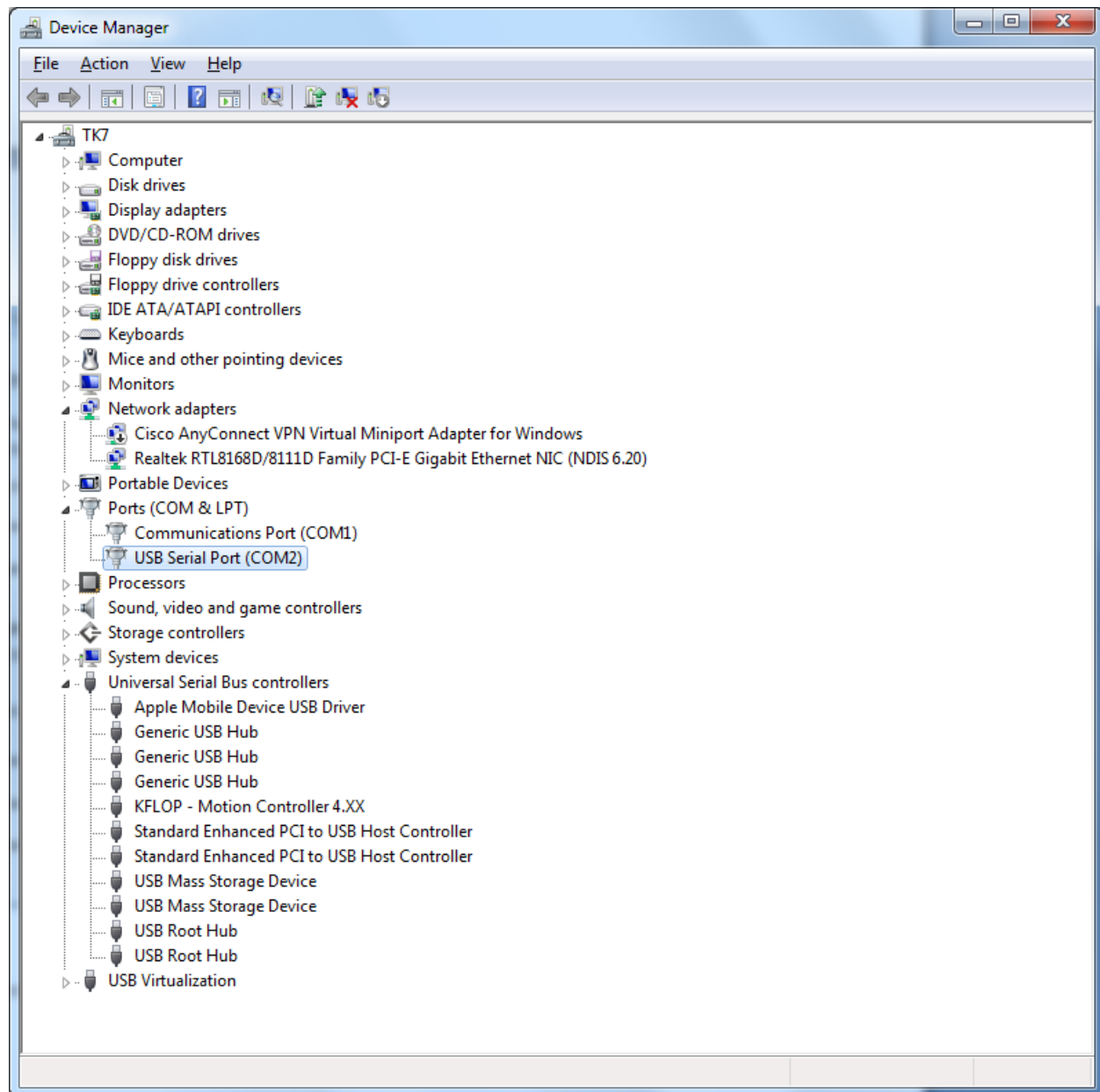
Cancel If Power Off ☐

Event On Surprise Removal ☐

Set RTS On Close ☐

Disable Modem Ctrl At Startup ☐

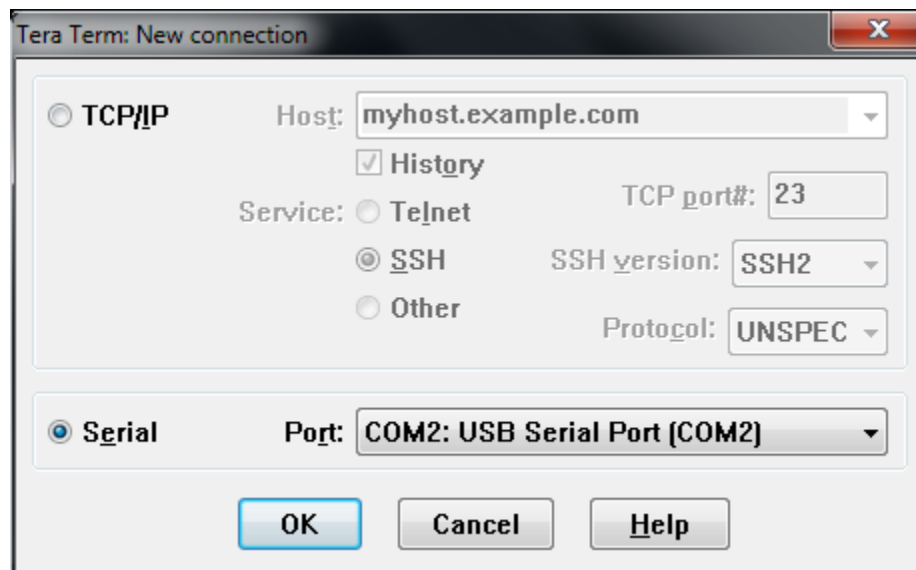
Change to other Com port if necessary (COM2)



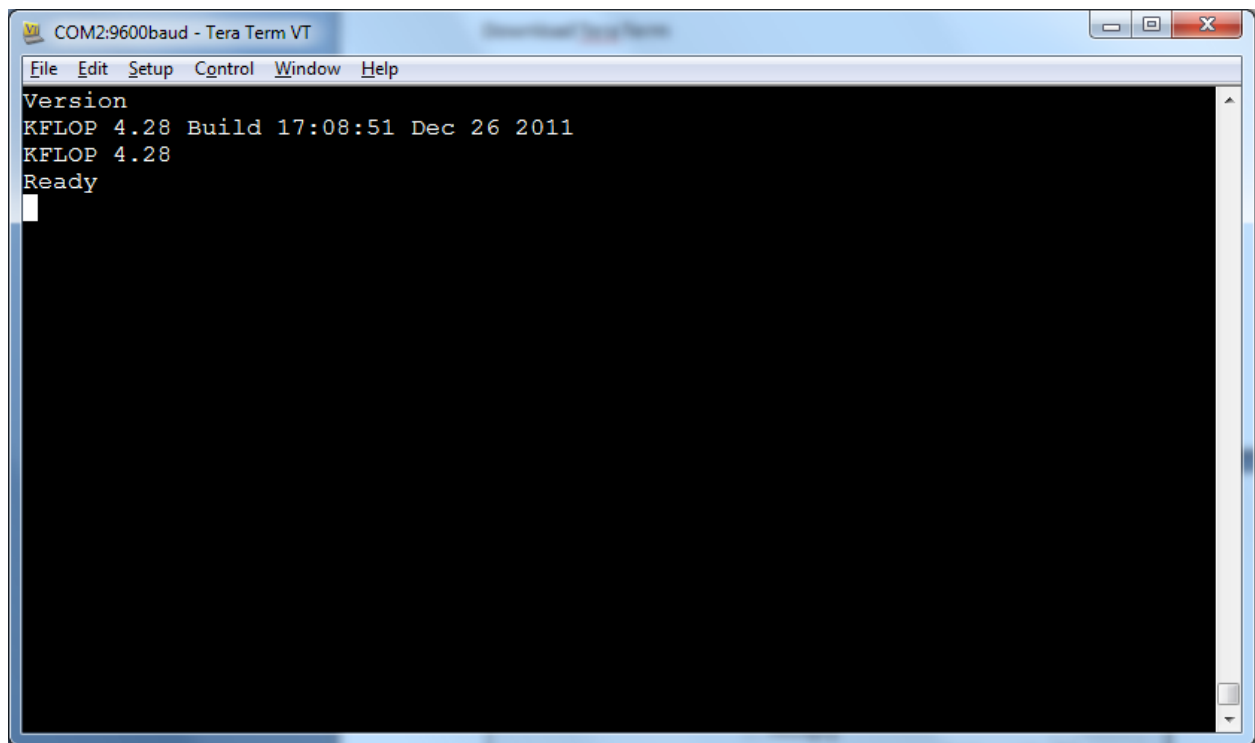
To test download and install a serial com program like Tera Term from

<http://ttssh2.sourceforge.jp/>

Run it and select Serial and the Com port you defined



Type "Version" and KFLOP should respond



The screenshot shows a Tera Term VT window titled "COM2:9600baud - Tera Term VT". The window has a menu bar with "File", "Edit", "Setup", "Control", "Window", and "Help". The main text area displays the following output:

```
Version
KFLOP 4.28 Build 17:08:51 Dec 26 2011
KFLOP 4.28
Ready
```

A white cursor is visible on the line following "Ready".